



The Birchwood

Starting At Only \$284,900

# PARKVIEW SOUTH

**3 Bedrooms**

**2 & 1/2 Bathrooms**

**Over 2,400 Sq. Ft.**

Main Level Living with Spacious  
Master Suite

9 Foot Ceilings throughout

Vaulted Master and Living Area

Granite Countertops

Maintenance Free Living

Access to T.A.R.T Trail

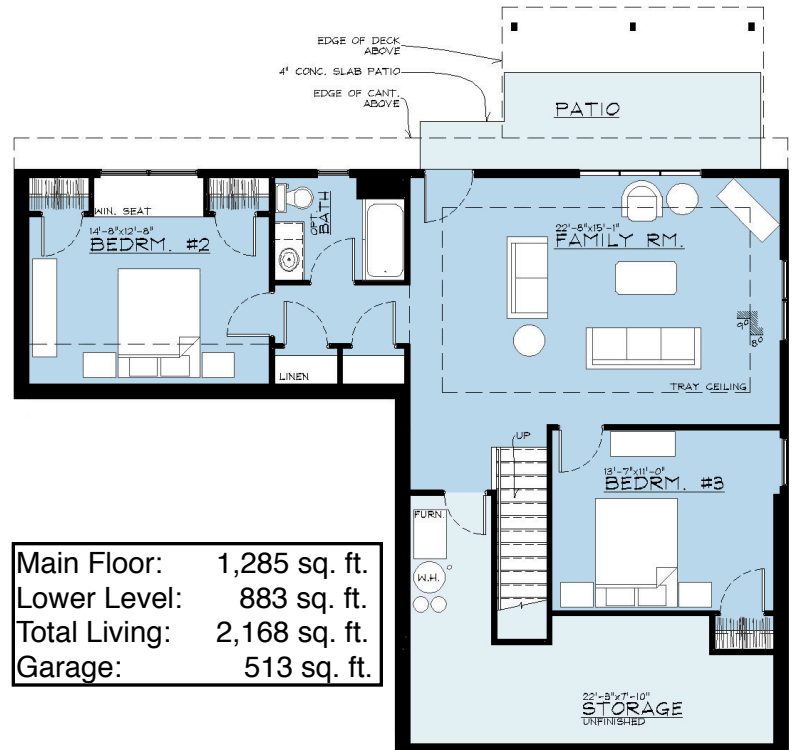
Steps to Yacht Club and Harbor

City Water and Sewer

1 Year Home Warranty

TC School District

**Included Features** Smart Trim Siding • Pella Energy Star Windows with Insulated Glass • Wayne Dalton Steel Garage Door Moen Plumbing Fixtures • 90+ Forced air natural gas furnace • Furniture Quality shaker style cabinets Solid Surface flooring on Main Level living areas • Ceramic tile in Laundry and Baths • Landscaping including irrigation and sod • Spacious Two Car Garage



Main Floor:	1,285 sq. ft.
Lower Level:	883 sq. ft.
Total Living:	2,168 sq. ft.
Garage:	513 sq. ft.

(888) 969-9009



**MORGAN FARMS**

MyMorganFarms.com

**SOCKS**  
CONSTRUCTION

Floor plans and artistic renderings are for visualization purposes and may not accurately depict actual homes when built. The Grove Development Company reserves the right to modify plans, specifications, features and prices without notice. Some features may only be available at additional cost. Square footages are approximate and subject to change without notice.